

📍 Akasia | Pretoria North



A BREATH OF *Fresh* LIVING

Theresa
PARK



Exclusive
**SAVINGS OF UP TO
R84,800**

1 Bed | 1 Bath Apartments
2 Bed | 1 Bath Apartments

**SELLING FROM ONLY
R544,900**

📍 Akasia | Pretoria North

Theresa
PARK

This development is a breath of fresh air, offering tenants 2-storey apartment blocks nestled in generously-sized gardens with established trees.

With 24-hour security, kids' play areas, a swimming pool, and communal braai areas, existing tenants are loyal and happily settled, and investors earn immediate income on registration. With an incredibly low price point and levies, plus excellent ROI, this is affordable, smart property investment at its best. Buy your future self some financial breathing space!



Theresa
PARK

Premium

INVESTMENT BENEFITS

With savings of up to R84,800 exclusive to IGrow investors!

- Only **R2,000** deposit
- Rental income up to **R6,405**
- ROI up to **13.59%**
- Rental Assist up to **R34,800***
- Monthly contributions as low as **-R341** / month
- **Bond and Transfer fees included** (saving you up to R50,000)
- **Already tenanted** - earn income on registration
- Up to **100%** bond financing available
- Managed by IGrow Rentals



Development

KEY HIGHLIGHTS

- 24-hour security and strict access control
- Solar panels on guardhouse
- Lush gardens with established trees
- Attractive, low-maintenance face-brick
- Communal swimming pool and clubhouse
- Braai area
- Shaded carports
- Large, shaded kids' play park with swing sets, see-saw, and jungle gym





Theresa
PARK

Apartment

FEATURES

- Modern open plan kitchen with built-in cupboards & stove
- Spacious living area
- Prepaid electricity and water meters
- DSTV ready
- Ample built-in cupboards
- Sliding doors to covered patios (ground floor)
- Discreet outdoor laundry drying areas





Theresa
PARK

Conveniently **SITUATED TO FULFILL ALL TENANTS' NEEDS**

Situated in a popular rental area in Pretoria North, well supplied with shops, schools, healthcare, and recreational facilities, as well as ample employment opportunities. Theresa Park is also a quick drive away from many of Pretoria's top tertiary institutions, including Onderstepoort Veterinary Academic Hospital, University of Pretoria Medical and Main Campuses, as well as various colleges.



Shopping & Recreation

- **1.9km** to Akasia Golf Club
- **5km** to Wonder Park Shopping Centre
- **6.3km** to Wonderboom Nature Reserve
- **11.4km** to Grizzlies Water Park

Education

- **1.1km** to SPARK Theresa Park
- **1.5km** to Theresa Park Primary
- **2.3km** to Theresa Park Secondary School
- **17.2km** to University of Pretoria Main Campus

Health & Wellness

- **3.1km** to Curves Gym
- **3.1km** to Life Pretoria North Surgical Centre
- **12.7km** to Netcare Montana Hospital





Theresa
PARK

One Bed Apartment

GROUND & 1ST FLOOR

Total unit size: _____ **36-53m²**

Projected monthly rental income from 2026 up to: — **R5,775**

Projected monthly bond repayment (30yr @ 10.50%):— **R4,984**

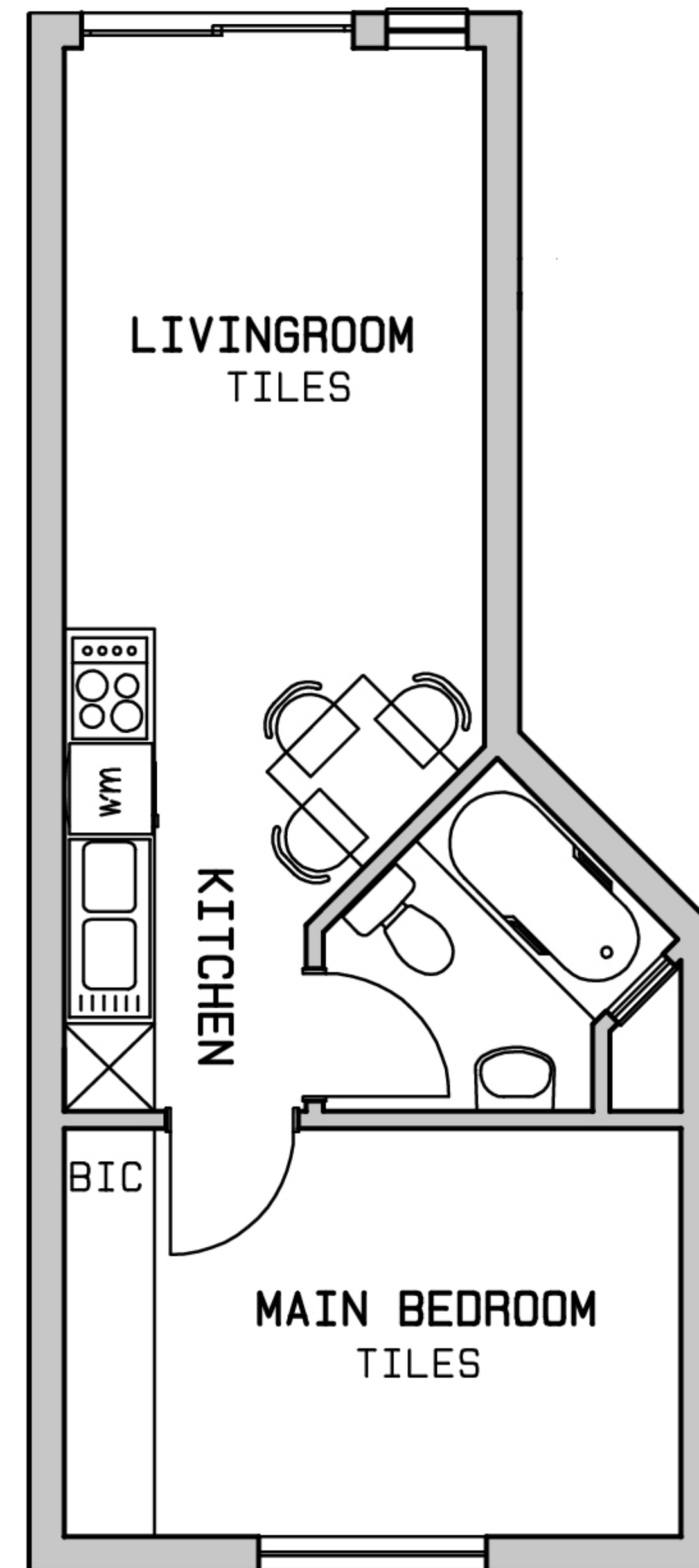
Est. monthly levy: _____ **R575**

Est. monthly property rates: _____ **R142**

Est. monthly contribution from: _____ **-R341**

Rental Assist up to: _____ **R12,000****

PRICED FROM R544,900



Theresa
PARK

Two Bed Apartment

GROUND & 1ST FLOOR

Total unit size: _____ **53-58m²**

Projected monthly rental income from 2026 up to: — **R6,405**

Projected monthly bond repayment (30yr @ 10.50%):— **R5,899**

Est. monthly levy: _____ **R852**

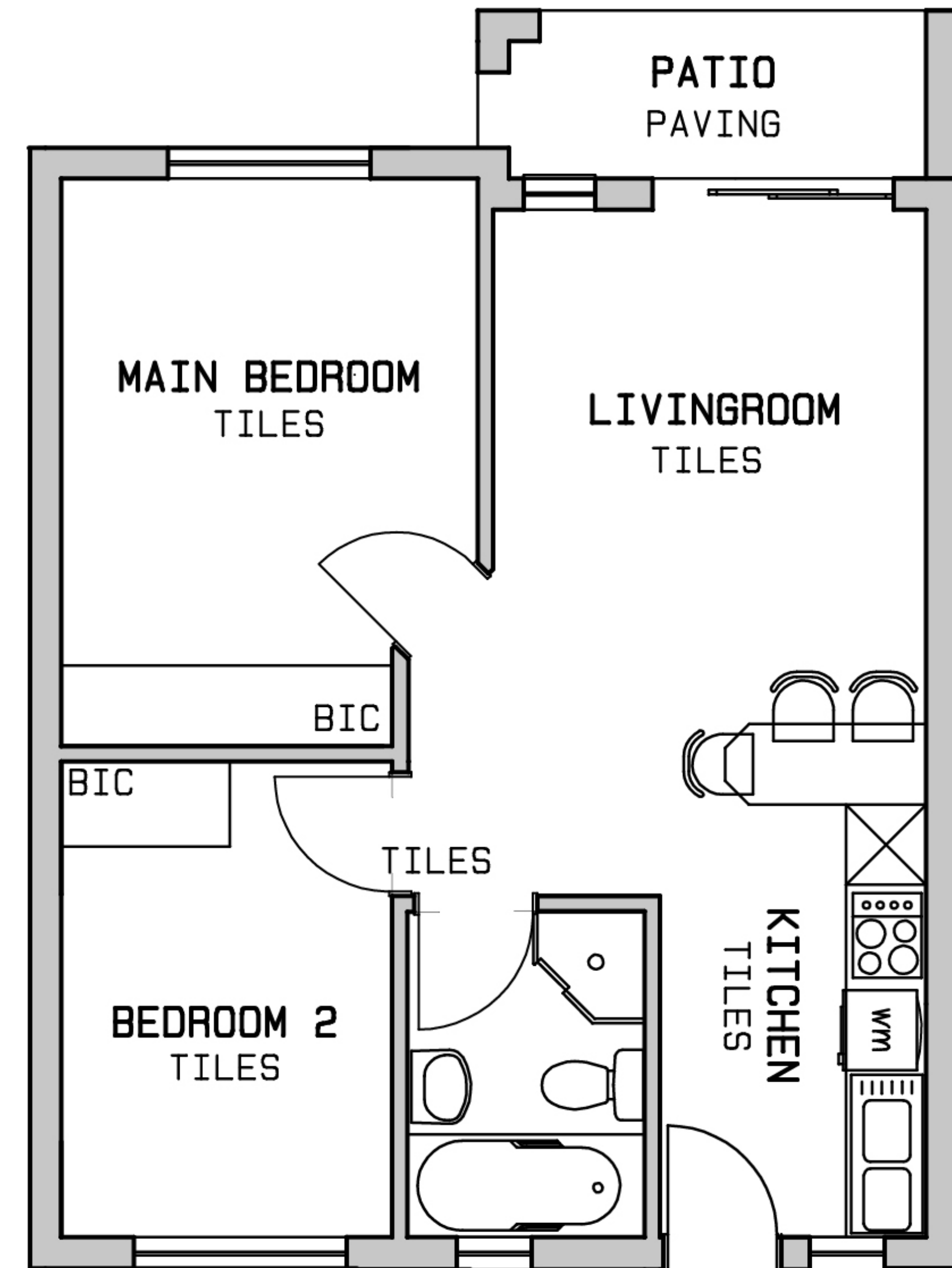
Est. monthly property rates: _____ **R386**

Est. monthly contribution from: _____ **-R569**

Rental Assist up to: _____ **R34,800****

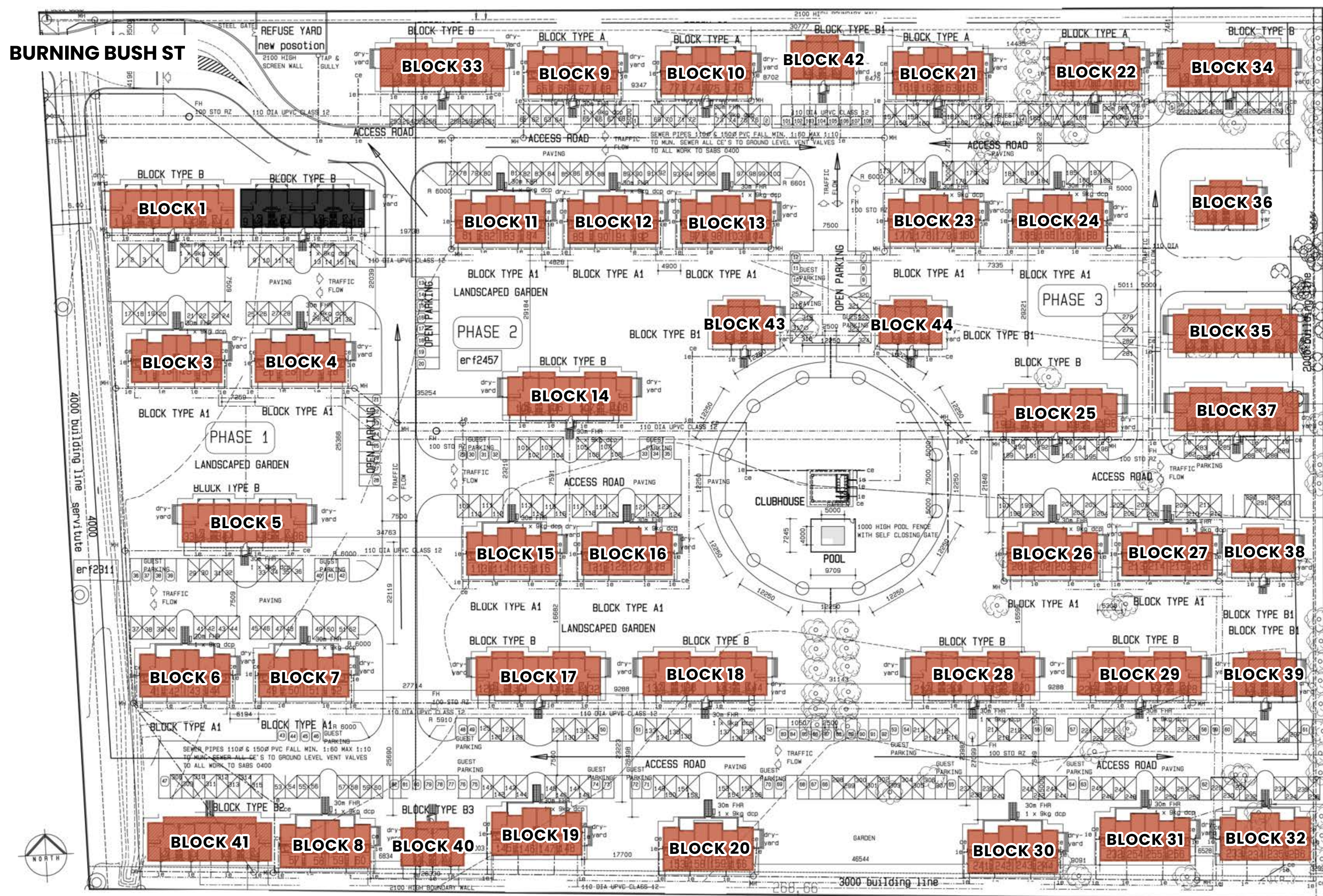
PRICED FROM R644,900

Theresa
PARK



Site DEVELOPMENT PLAN | 242 UNITS

Theresa
PARK



Theresa
PARK



Get in touch **WITH US TODAY!**

IGrow is your trusted partner in property investment, helping first-time and seasoned investors achieve financial independence through smart, high-performing property investments.

**WE'RE HERE TO GUIDE YOU EVERY
STEP OF THE WAY.**



+27 (21) 979-2501



info@igrow.co.za



Disclaimer

IGrow makes no warranties, whether expressed or implied, in regard to the email, contents, accuracy, financial projections and/or assumptions nor availability. The User assumes all responsibility and risk for the use of the information and other material provided. IGrow shall not be liable for any loss, injury, damage, cost, penalty or claim resulting from the use of the materials or projections/assumptions, whether direct or indirect. The User indemnifies IGrow and holds it harmless against any and all liability, loss, damage, penalty, cost or claim of whatsoever nature suffered by any third party in relation to any act or omission by the User in relation to the information and the use thereof by the User. Attorney and bond fees for transfer paid by Seller only where appointed attorney attends transfer. This may exclude buyers using bank facilities. Fees excluding any bank initiation fee, correspondent attorney fees and courier fees if applicable.

Footnotes:

*Depending on unit chosen

**Rental assist only applicable where buyer signs a rental mandate with IGrow Rentals for the duration of the rental assist offering.