

📍 Northriding | Randburg



EFFORTLESSLY *Fabulous*





Affordable

INVESTMENT OPPORTUNITY

1 Bed | 1 Bath Apartments
2 Bed | 1 Bath Apartments
2 Bed | 2 Bath Apartments

FROM R999,000

📍 Northriding | Randburg



Isabel offers gorgeous designer apartments that are already tenanted, giving investors immediate income on registration. The area combines the best of both urban and country living, with exceptional employment opportunities, dog-friendly parks, ice skating rinks, and concert venues. Close to top schools, healthcare, and shopping facilities, this is an ideal hub for community life.

The great location, stunning fittings, and exceptional amenities on offer drive high demand. Two swimming pools and a fabulous clubhouse, plus playgrounds for kids, keep tenants loyal and happy. Each block in this fully secure estate has its own beautifully landscaped courtyard and lifts to upper floors, as well as basement parking.



Incredible

INVESTMENT BENEFITS

- **Already tenanted** - income generating
- Bond & transfer fees included, **saving you up to R80,000***
- **Zero** deposit required
- Up to **100%** bond financing available
- Gross yields up to **14.18%***
- Rental Assist up to **R163,200*** exclusively to IGrow Investors
- **Rental management special:** 50% off for 5 years*
- Monthly rental income up to **R10,900** per month*
- Monthly contribution from **-R812***



Development **HIGHLIGHTS**

- Glamorous clubhouse with kitchen area, landscaped courtyard, and lit swimming pool
- 2nd swimming pool and paddling pool in a separate courtyard
- Playgrounds with jungle gyms for the kids
- 24-hour manned security with off-site monitored CCTV cameras
- Covered parking for all units (2 Bed, 2 Bath units get 2 parking bays)
- Lifts and beautifully landscaped courtyards in each block

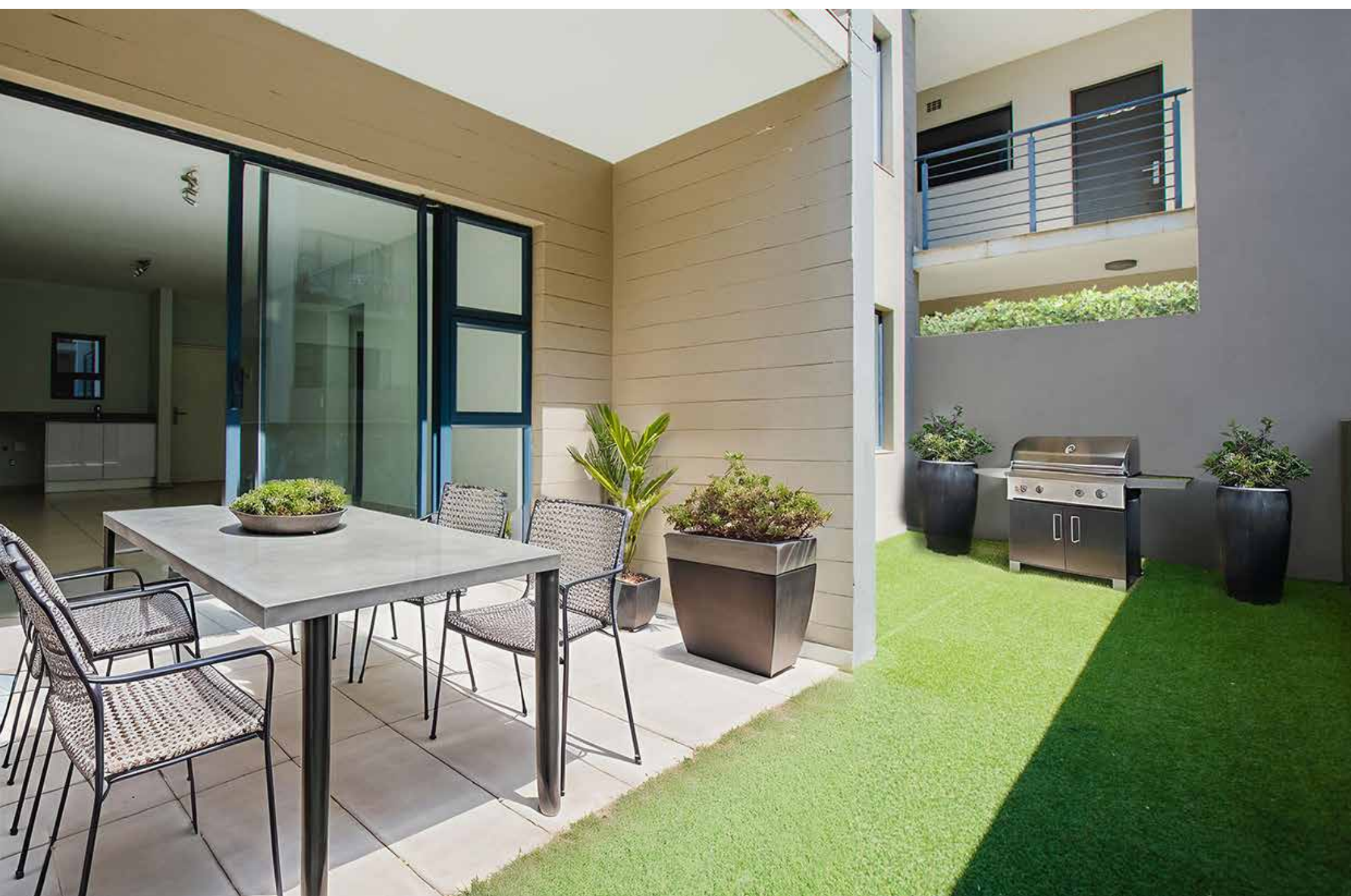




Apartment **FEATURES**

- Plumbing points for both dishwasher and washing machine
- Fibre installed
- DSTV ready
- Stunning high-end finishes
- Sliding-door built-in cupboards
- Tiled throughout for easy maintenance
- Clever design to maximise natural light
- Pre-paid electricity and water meters
- Built-in oven with hob and extractor fan





A smiling woman with short dark hair, wearing a blue and white striped shirt, is the central figure. She is looking towards the camera with a bright smile. The background is a soft-focus image of purple flowers, likely jacarandas, against a clear blue sky. The overall mood is bright, cheerful, and aspirational.

Positioned **FOR SUCCESS IN POPULAR NORTHRIDING**

Isabel is within easy reach of Fourways, Sandton, and the West Rand, offering an ideal lifestyle for professionals and families. Lanseria International Airport is within easy reach, as well as the Cradle of Humankind (a World Heritage site) and popular mountain-biking trails.

An exciting new development in the area is the BAPs Hindu Mandir, right next door to Isabel Estate. This is the largest Hindu temple in the Southern Hemisphere, with a cultural centre, clinic, and sports grounds.





Recreation

- **400m** to BAPS Hindu temple, Cultural complex, Sports facility
- **800m** to Blandford Manor Botannical Gardens

Shopping & Dining Out

- **3.1km** to Virgin Active
- **4.3km** to Northgate mall & Ice rink
- **7.6km** to Montecasino
- **7.6km** to Fourways Adventure Golf

Education & Medical

- **1.7km** to Northriding Secondary School
- **3km** to Netcare Olivedale Hospital
- **3.2km** to Cooper College Primary School
- **4.2km** to Curro Douglasdale



Typical One Bed | One Bath



Unit size: _____ **50m²**

Projected monthly rental income from: _____ **R8,300**

Projected monthly bond repayment (30yr @ 10.50%):— **R9,138**

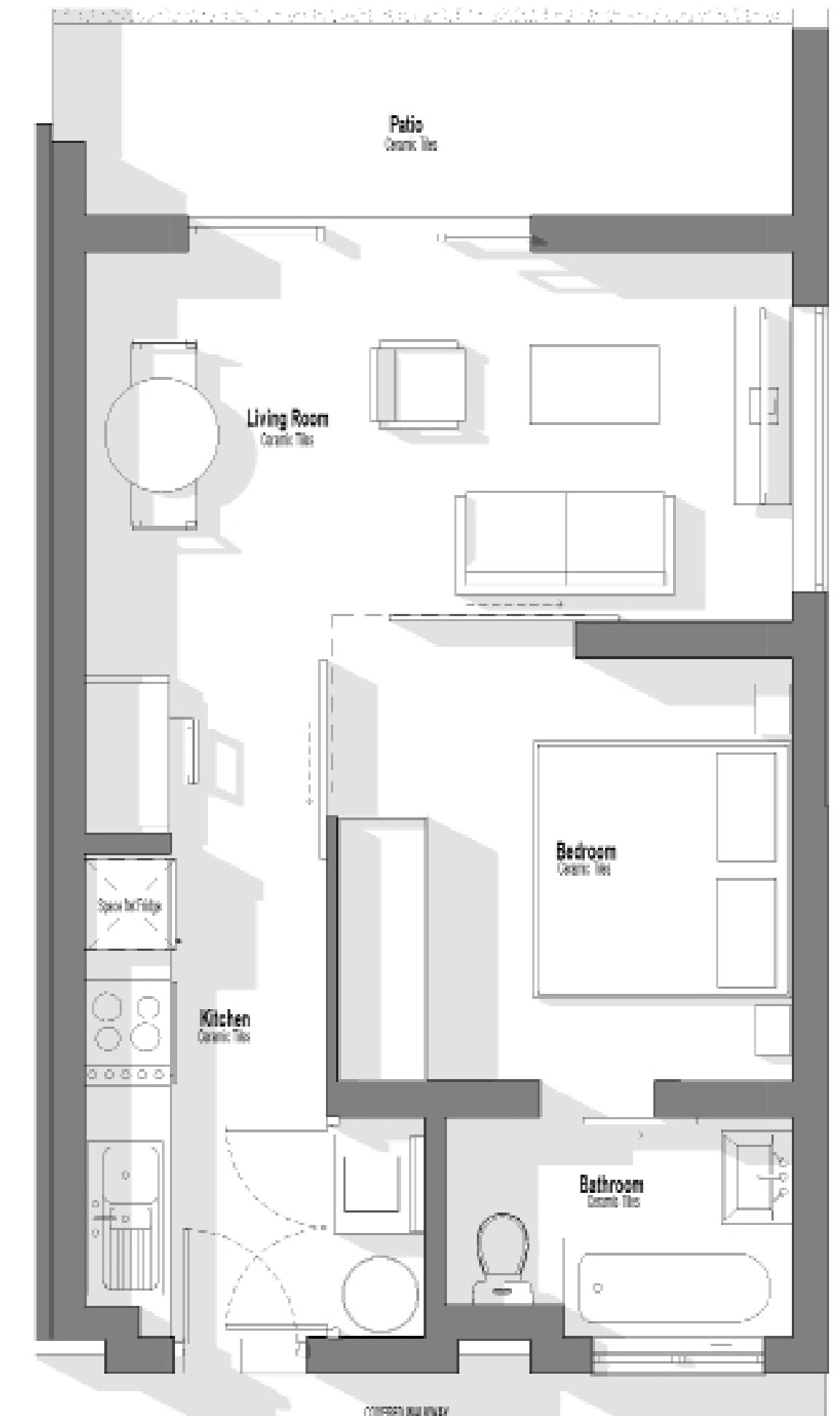
Est. monthly levy: _____ **R1,637**

Est. monthly property rates: _____ **R560**

Est. monthly contribution from: _____ **-R812**

Rental Assist of: _____ **R100,200***

PRICED AT R999,000



Typical Two Bed | One Bath



Unit size: _____ **63-80m²**

Projected monthly rental income from: _____ **R10,600**

Projected monthly bond repayment (30yr @ 10.50%):— **R11,882**

Est. monthly levy: _____ **R2,255**

Est. monthly property rates: _____ **R741**

Est. monthly contribution from: _____ **-R1,088**

Rental Assist up to: _____ **R146,400***

PRICED FROM R1,199,000



Typical Two Bed | Two Bath



Unit size: _____ **84-89m²**

Projected monthly rental income from: _____ **R10,900**

Projected monthly bond repayment (30yr @ 10.50%):— **R13,255**

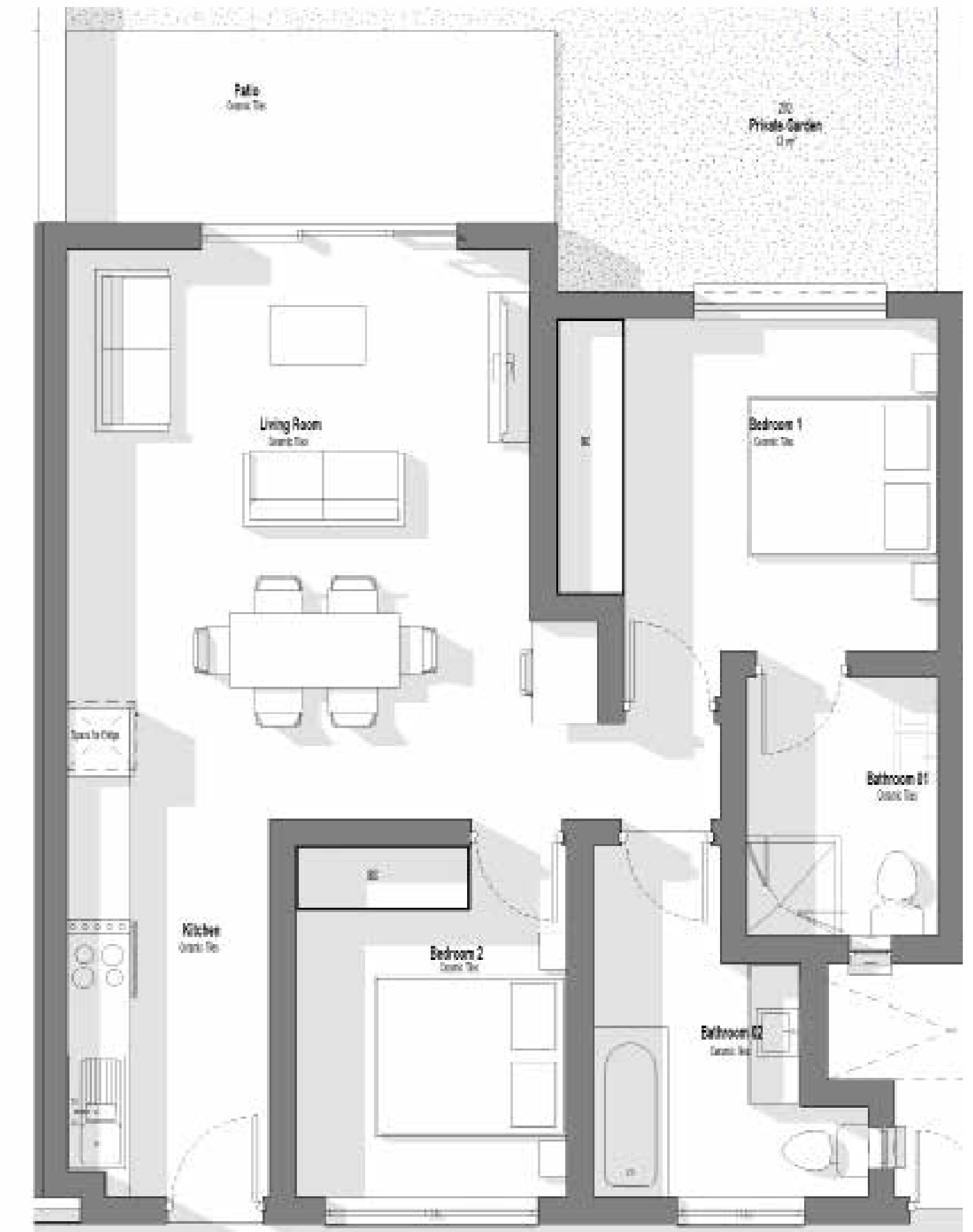
Est. monthly levy: _____ **R2,365**

Est. monthly property rates: _____ **R784**

Est. monthly contribution from: _____ **-R1,630**

Rental Assist up to: _____ **R163,200***

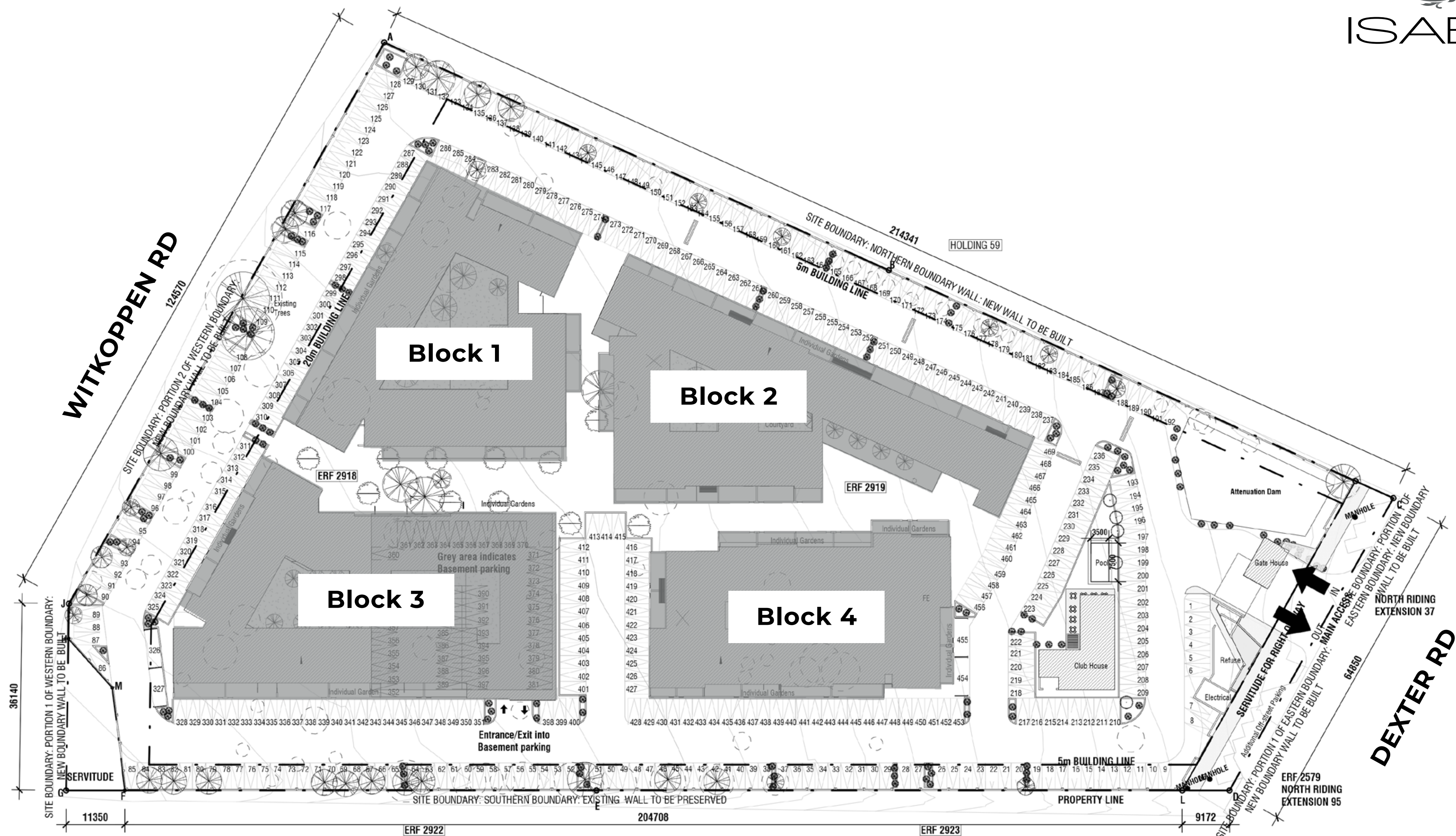
PRICED AT R1,449,000



DEVELOPMENT PLAN | 36 UNITS



ISABEL
estate





Get in touch **WITH US TODAY!**

IGrow is your trusted partner in property investment, helping first-time and seasoned investors achieve financial independence through smart, high-performing property investments.

**WE'RE HERE TO GUIDE YOU EVERY
STEP OF THE WAY.**



+27 (21) 979-2501



info@igrow.co.za



Disclaimer

IGrow makes no warranties, whether expressed or implied, in regard to the email, contents, accuracy, financial projections and/or assumptions nor availability. The User assumes all responsibility and risk for the use of the information and other material provided. IGrow shall not be liable for any loss, injury, damage, cost, penalty or claim resulting from the use of the materials or projections/assumptions, whether direct or indirect. The User indemnifies IGrow and holds it harmless against any and all liability, loss, damage, penalty, cost or claim of whatsoever nature suffered by any third party in relation to any act or omission by the User in relation to the information and the use thereof by the User. Attorney and bond fees for transfer paid by Seller only where appointed attorney attends transfer. This may exclude buyers using bank facilities. Fees excluding any bank initiation fee, correspondent attorney fees and courier fees if applicable.

Footnotes:

*Depending on unit chosen

**Rental assist only applicable where buyer signs a rental mandate with IGrow Rentals for the duration of the rental assist offering.