

thrive *Manor*

3 & 4 Bedroom Luxury Homes

UPMARKET ESTATE



About the Developer

Thrive Development is a forward-thinking residential property developer dedicated to building vibrant, inclusive communities that stand the test of time. With a proven track record in delivering high-quality homes across Gauteng, we pride ourselves on our hands-on approach to every aspect of development — from land acquisition and urban planning to architecture, construction, and landscaping.

Our mission is to create homes that are more than just bricks and mortar — they are places where families grow, individuals thrive, and communities connect. Every development is thoughtfully designed with modern lifestyles in mind, combining contemporary architecture with functional layouts, energy-efficient features, and secure living environments.

What sets us apart is our commitment to quality, transparency, and long-term value. We collaborate with trusted partners, local professionals, and experienced contractors to ensure each home meets the highest standards — whether you're a first-time buyer, an investor, or someone looking to upgrade your lifestyle. At Thrive, we don't just build homes. We build foundations for better living.



About the Estate

Welcome to Thrive Manor—a secure, modern estate where space, comfort, and quality come together to create a better way of living. Tucked inside a full Security Estate, Thrive Manor offers just 67 freestanding homes, each on a generous stand with ample room for your family to grow, relax, and enjoy life. These spacious 3- and 4-bedroom homes range from 190m² to 208m², and feature open-plan living areas, stylish finishes, and smart extras like solar geysers, gas hobs, fibre-ready connectivity, and built-in braais. Whether you prefer a private garden or balcony, every home includes a double garage with direct access, plus an additional private parking bay for added convenience. Whether you're upgrading, starting fresh, or investing in long-term value, Thrive Manor offers the space, security, and lifestyle you've been looking for—all in a warm, family-friendly estate you'll be proud to call home.

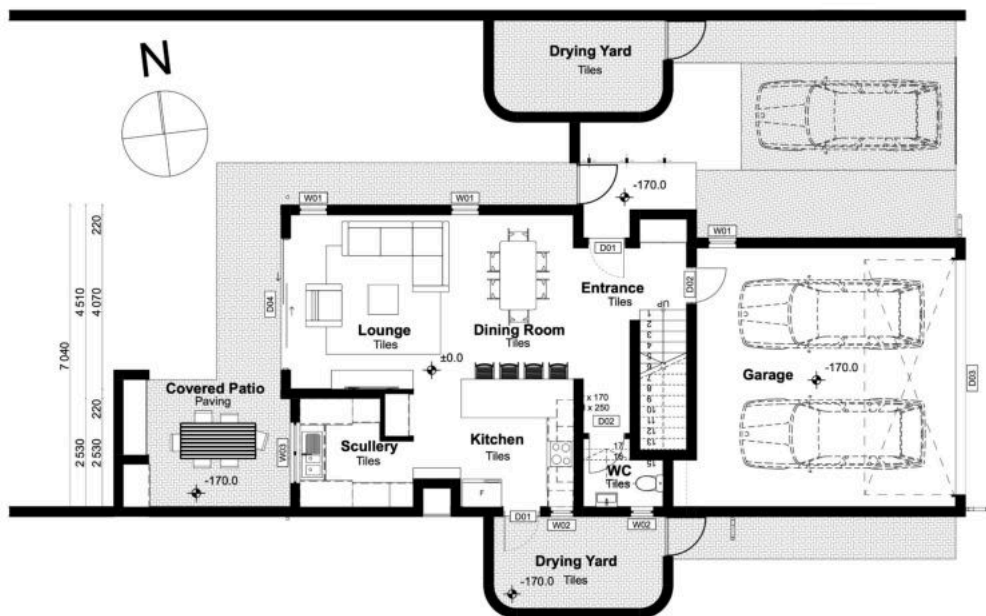




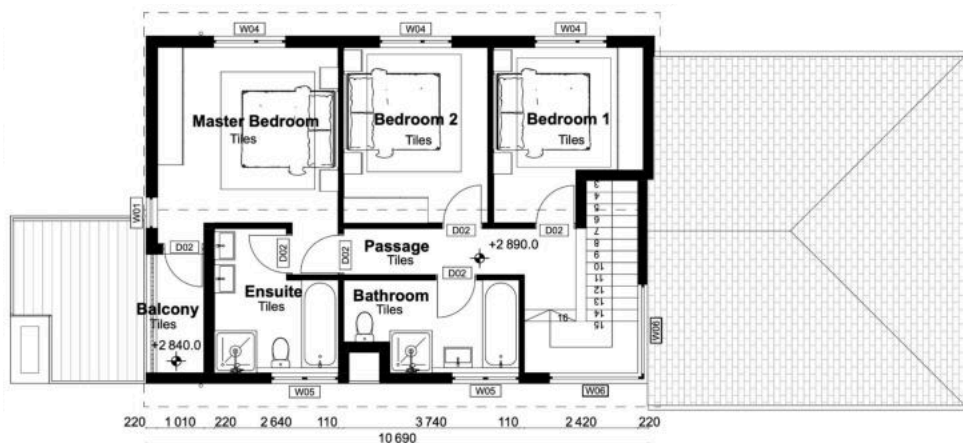
Type A

190m²

Ground Floor



First Floor



Features

3 Bedrooms

2 Full Bathrooms

1 Guest Toilet

Living Room

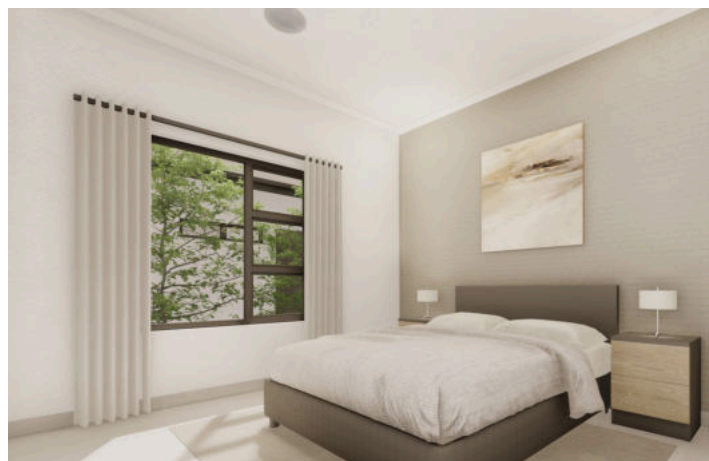
Dining Room

Scullery + Drying Yard

Covered Patio +
Built-in Braai

Double Garage +
1 Private Parking

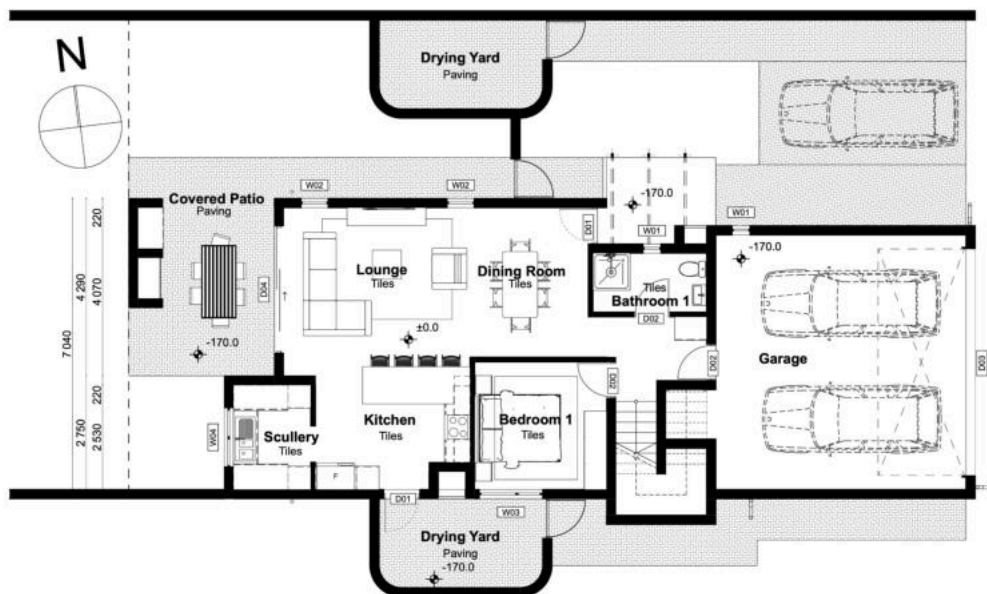
Balcony



Type B

208m²

Ground Floor



First Floor



Features

4 Bedrooms

3 Full Bathrooms

Study Nook

Living Room

Dining Room

Scullery + Drying Yard

Covered Patio +
Built-in Braai

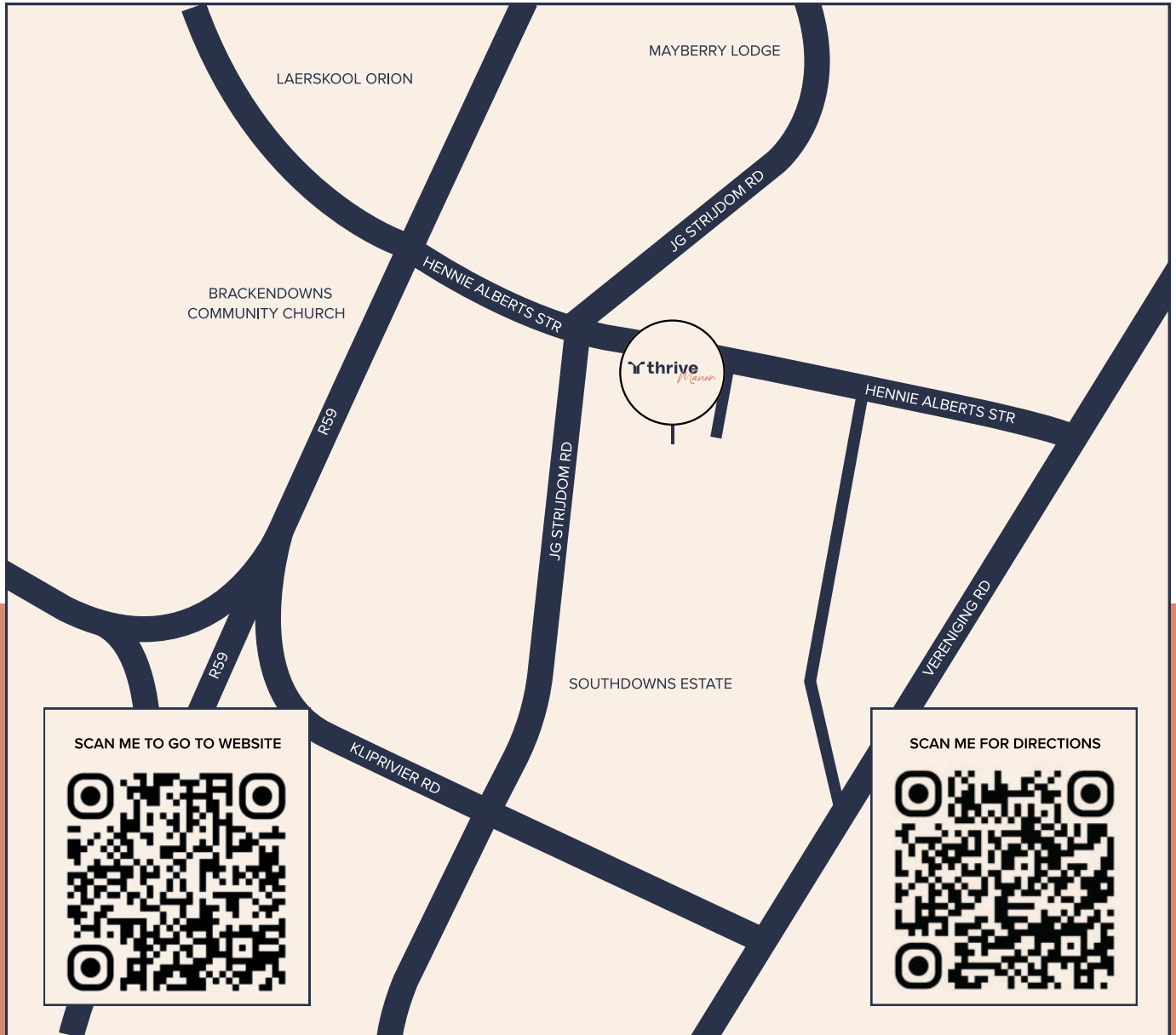
Double Garage +
1 Private Parking

Balcony



Find us

Corner of J.G. Strijdom Road and Hennie Alberts, Alberton 1448



Contact us

+27 66 515 7076 | +27 82 454 7908 | info@coredev.co.za

www.thrivedevelopment.co.za